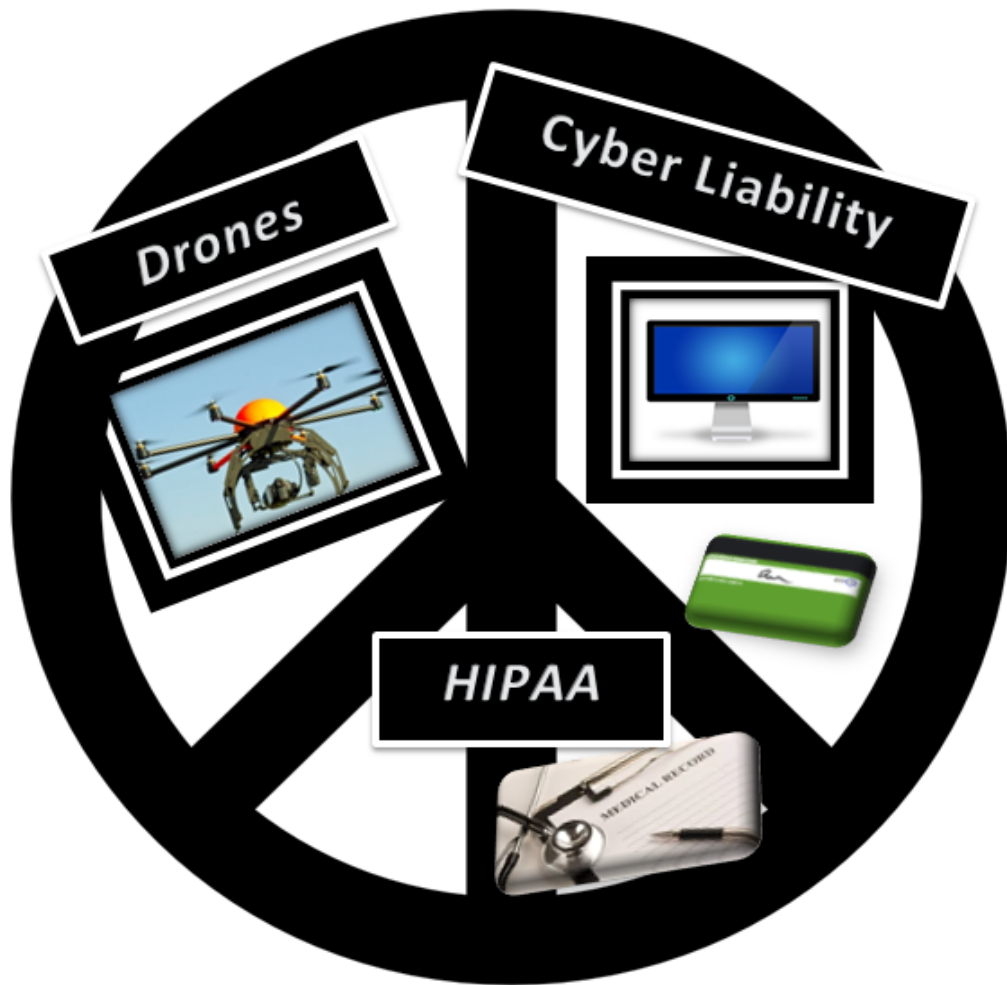




# ANNUAL REPORT 2014



**What Do These Have In Common?**  
**- All Are Covered By YOUR LWMMI Policy!**

# LWMMI

## League of Wisconsin Municipalities Mutual Insurance

### Directors

**David Benforado**

Village Trustee  
Village of Shorewood Hills

**David De Angelis**

Village Manager  
Village of Elm Grove

**Ronald Hayward**

Village President  
Village of West Milwaukee

**Kathleen Morse**

Clerk/Treasurer  
City of Rice Lake

**Mark Rohloff**

City Manager  
City of Oshkosh

**Zachary Vruwink**

Mayor  
City of Wisconsin Rapids

**Jerry Deschane**

Executive Director  
League of Wisconsin  
Municipalities

### Officer

**Dennis Tweedale**

Chief Executive Officer  
League of Wisconsin  
Municipalities  
Mutual Insurance

402 Gammon Place  
Suite 225  
Madison, WI 53719

608.833.9595 p  
608.833.8088 f  
dennis@lwmmi.org  
www.lwmmi.org



## 2014 ANNUAL REPORT TO POLICYHOLDERS

Often we think of insurance as a program we have to buy, but hope not to use. While this may be true, LWMMI is designed to provide League Members with peace of mind. “Don’t Worry It’s Covered” allows your elected officials and employees to make good decisions for the community without the worry of “if we get sued, are we covered?”

Take a look again at the coverage – Drones, HIPAA and Cyber Liability – three risks automatically covered by LWMMI – a program that anticipates your needs – sometimes even before you have a need.

The 2014 numbers and charts in this report – tell a great story about the power of working together.

This year, your loss control efforts have once again paid off. Surplus and assets grew, allowing the Directors to declare another \$1.9 million policyholder dividend.

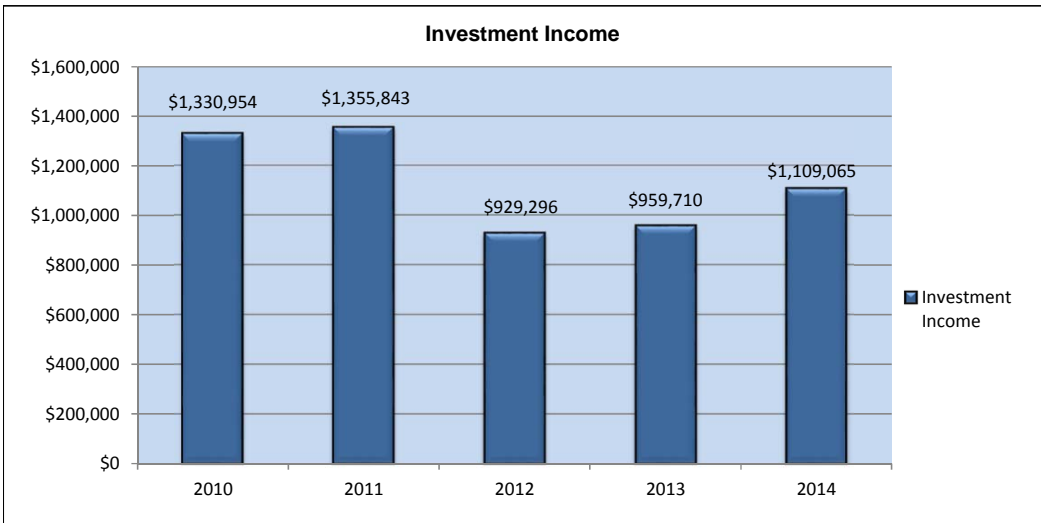
As we continue our “mutual” journey, your expectations of solid coverage and financial stability remain paramount and our main focus.

On behalf of the Directors, Staff and Service Providers:

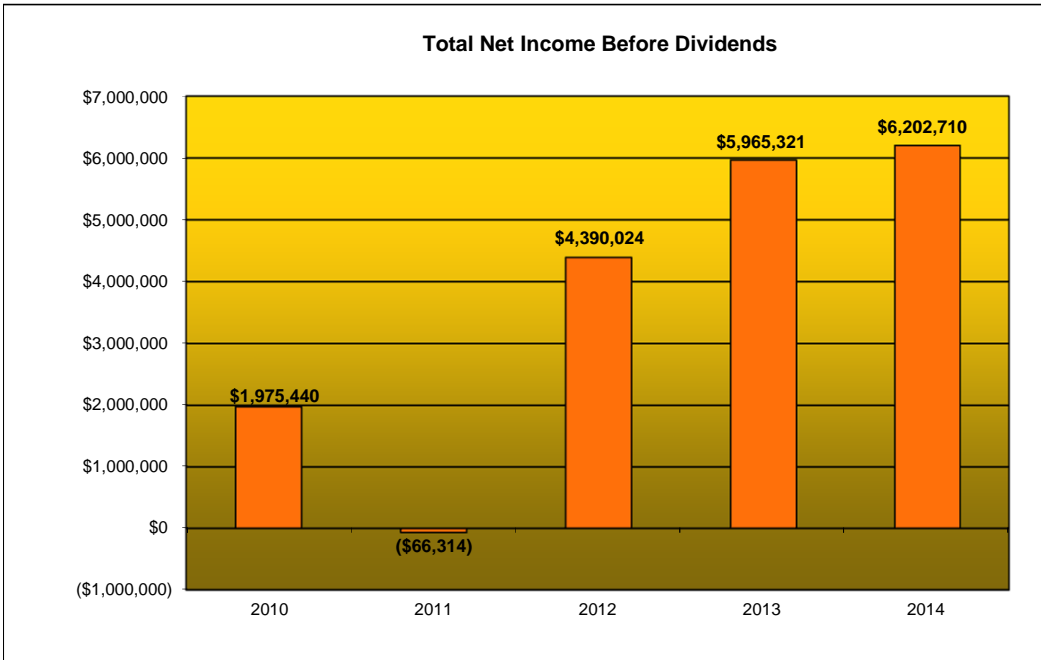
**“Thank You for Your Participation and  
Don’t Worry – You’re Covered”**

A handwritten signature in black ink, appearing to read "David L. De Angelis".

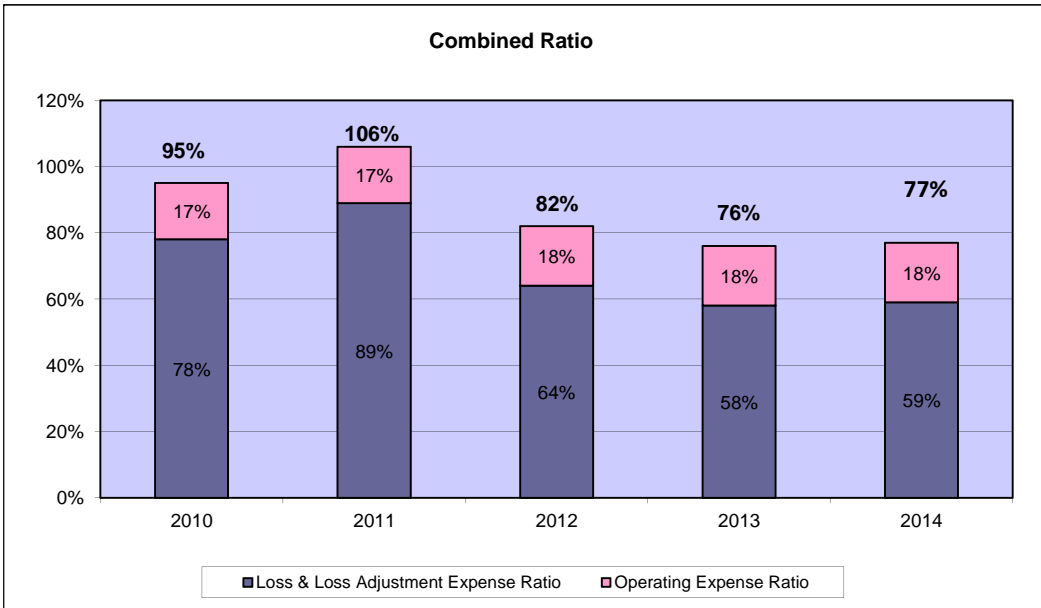
David L. De Angelis  
President



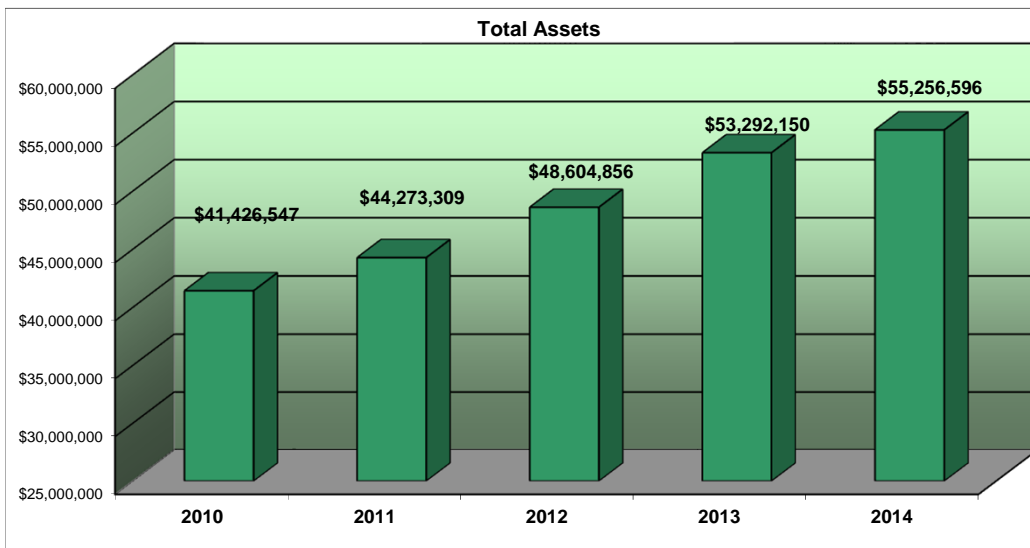
Invested assets continue to grow. However, interest rates on bonds remain at historic lows, resulting in lower investment returns for the past three years.



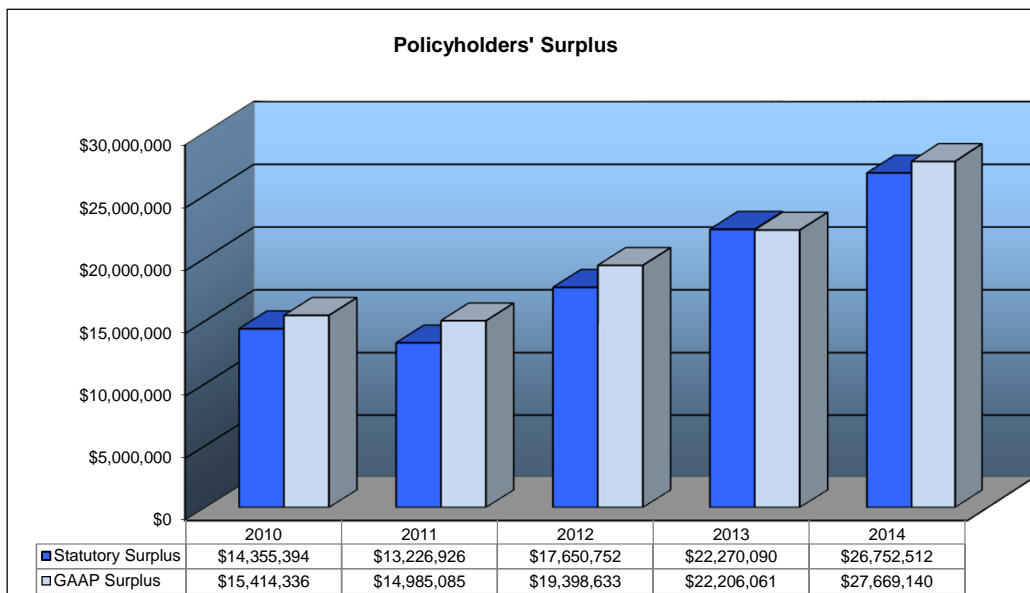
In 2011 LWMMI experienced a small Net Loss Before Dividends of \$66,314 because of unusually severe loss activity. There was Net Income in each of the other 4 years, allowing LWMMI to strengthen surplus and to pay dividends to members.



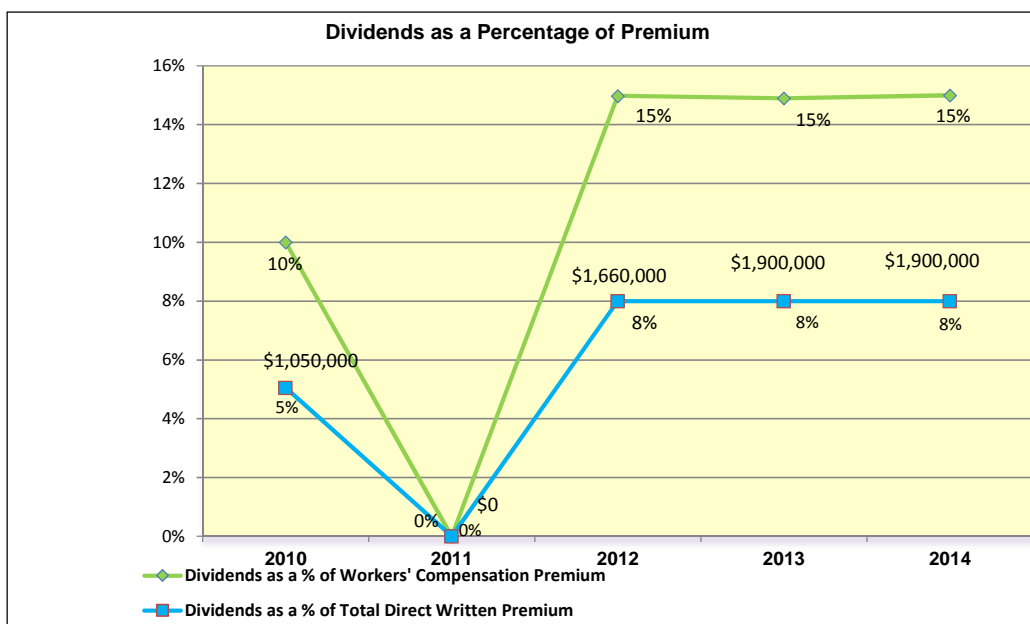
This chart shows where each premium dollar is spent by LWMMI. During 2014 \$0.18 was used to pay expenses and \$0.59 was used to pay losses.



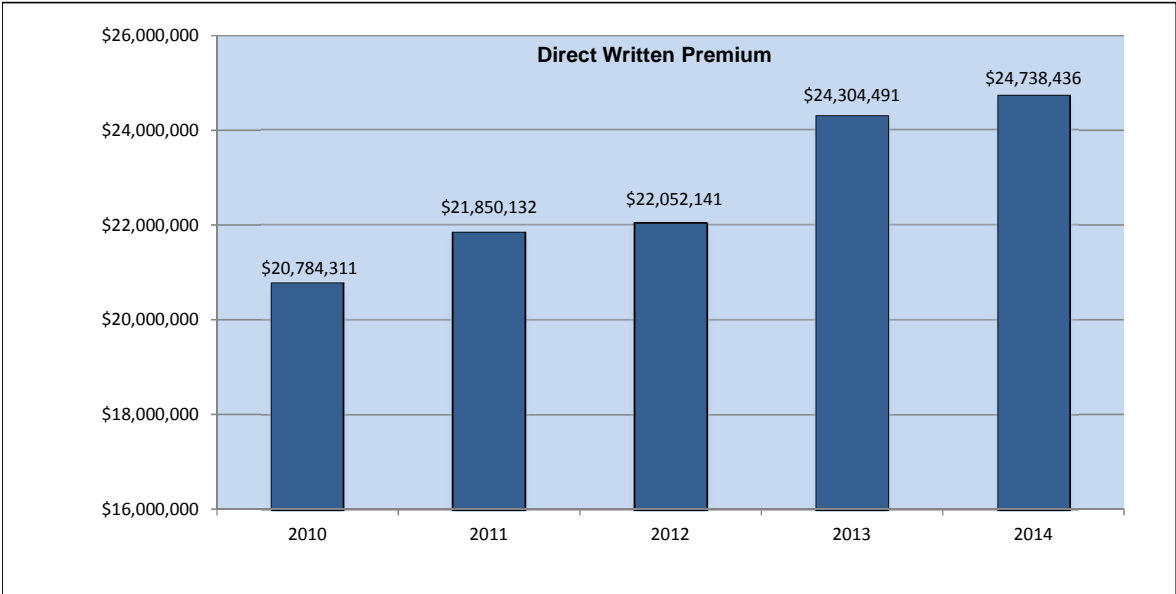
LWMMI's statutory asset base has continued to grow as premiums are collected to cover future losses. Assets held as of December 31, 2014 were \$55.3 million, with \$47.9 million held in cash and investments.



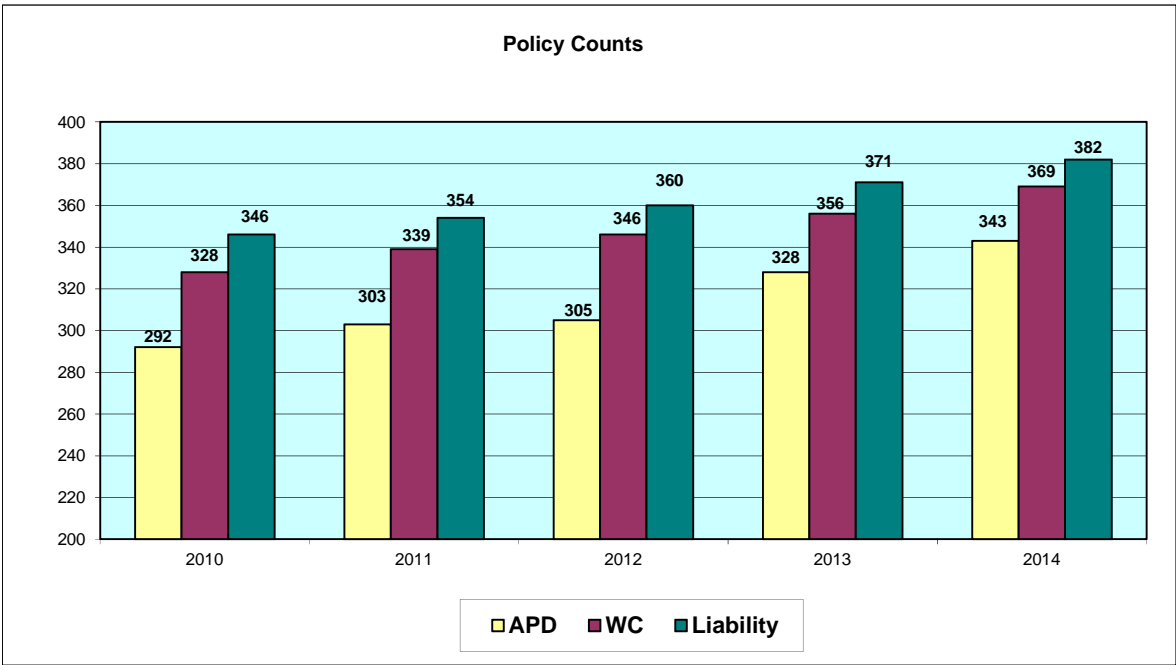
Surplus represents the net worth of LWMMI and is calculated as total assets minus liabilities. LWMMI's surplus on a GAAP basis is approximately \$27.7 million, which ensures financial stability for future years. Surplus is \$26.7 million under the Statutory basis of accounting, which is used for regulatory purposes.



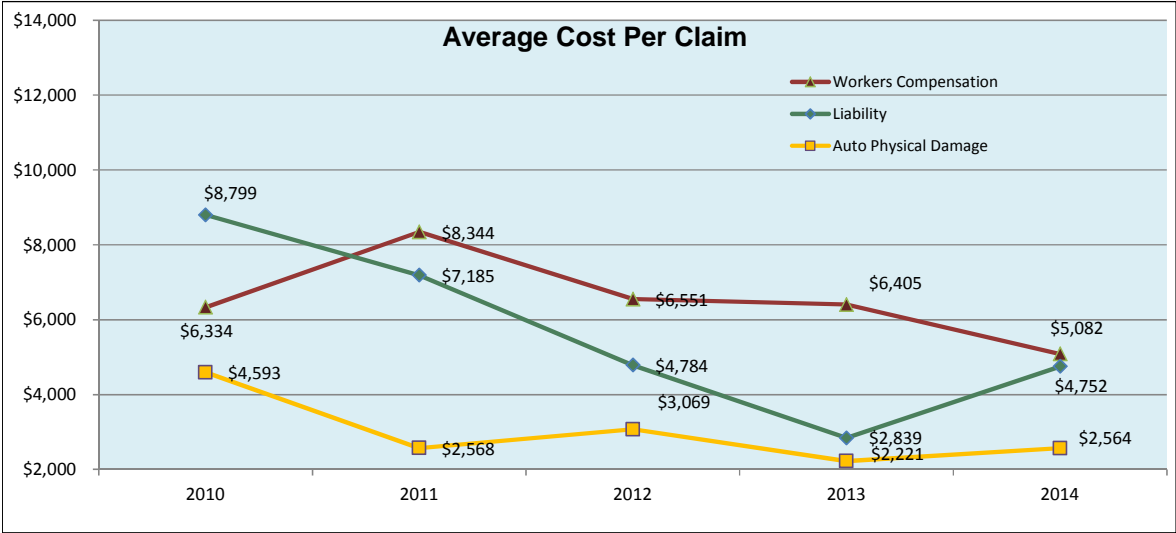
LWMMI had a profitable year in 2014 and declared a \$1,900,000 dividend. To date LWMMI has returned \$11,749,337 to members via dividends.



LWMMI's total premium has increased each year as new members are added.



Policy counts for all lines of business have also increased each year since LWMMI was formed.

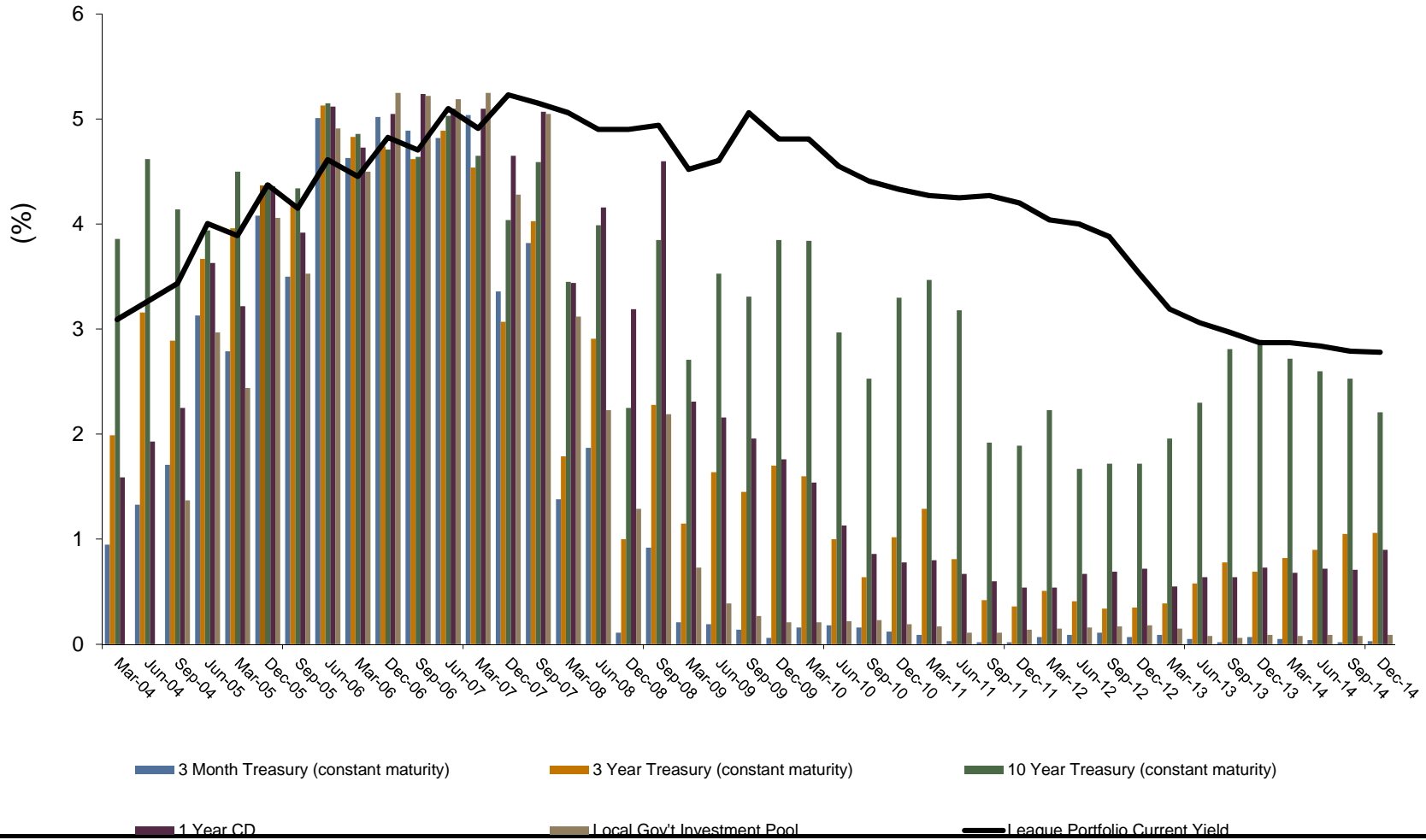


The average cost per claim for Workers Compensation decreased in 2014. The average cost per claim for both Auto Physical Damage and Liability increased.





# Performance Review



# LWMMI

## League of Wisconsin Municipalities Mutual Insurance

### IMPORTANT PHONE NUMBERS FOR THE LWMMI PROGRAM:

#### DIRECTORS AND CEO:

David Benforado, Village of Shorewood Hills, Trustee 608- 267-2680  
dbenforado@shorewood-hills.org

Dave De Angelis, Village of Elm Grove, Manager 262-782-6700  
deangelis@elmgrovewi.org

Ron Hayward, Village of West Milwaukee, President 414-645-1530  
ronald.hayward@westmilwaukee.org

Kathy Morse, City of Rice Lake, Clerk / Treasurer 715-234-7088  
kmorse@ricelakegov.org

Mark Rohloff, City of Oshkosh, Manager 920-236-5002  
mrohloff@ci.oshkosh.wi.us

Zachary Vruwink, City of Wisconsin Rapids, Mayor 715-421-8200  
zvruwink@wirapids.org

Jerry Deschane, League of Wisconsin Municipalities, Executive Director 608-267-2380  
jdeschane@lwm-info.org

Dennis Tweedale, LWMMI CEO 608-833-9595  
dennis@lwmmi.org

Sandy Hagen, LWMMI Office Manager 608-833-9595  
sandra@lwmmi.org

#### AGENTS:

Mike Zagrodnik, Baer Insurance Services, LLC 608-830-5803  
mikez@baerinsurance.com

Phil Burkart, Burkart-Heisdorf Insurance Agency, Inc. 920-369-0141  
philb@burkart-heisdorf.com

Bill Barnes, Business Insurance Group 715-362-5557  
bill@businsgroup.com

Rick Kalscheuer, R&R Insurance Services, Inc. 262-953-7215  
rick.kalscheuer@rrins.com

Darrel Zaleski, Spectrum Insurance Group, LLC 715-858-9865  
darrel.zaleski@spectruminsgroup.com

Terry Christen, Westland Insurance Services, Inc. 608-372-3286  
terry.christen@westlandinsurance.com

Tim Nickels, Willis of Wisconsin, Inc. 920-968-5281  
timothy.nickels@willis.com

#### CLAIMS PROCESSING:

Workman's Compensation Claims – United Heartland 262-787-7422  
Derik Grieser derik.grieser@unitedheartland.biz

Liability/Auto Damage Claims – Statewide Services, Inc. 608-828-5461  
aconlin@statewidesvcs.com

#### Directors

**David Benforado**  
Village Trustee  
Village of Shorewood Hills

**David De Angelis**  
Village Manager  
Village of Elm Grove

**Ronald Hayward**  
Village President  
Village of West Milwaukee

**Kathleen Morse**  
Clerk/Treasurer  
City of Rice Lake

**Mark Rohloff**  
City Manager  
City of Oshkosh

**Zachary Vruwink**  
Mayor  
City of Wisconsin Rapids

**Jerry Deschane**  
Executive Director  
League of Wisconsin  
Municipalities

#### Officer

**Dennis Tweedale**  
Chief Executive Officer  
League of Wisconsin  
Municipalities  
Mutual Insurance

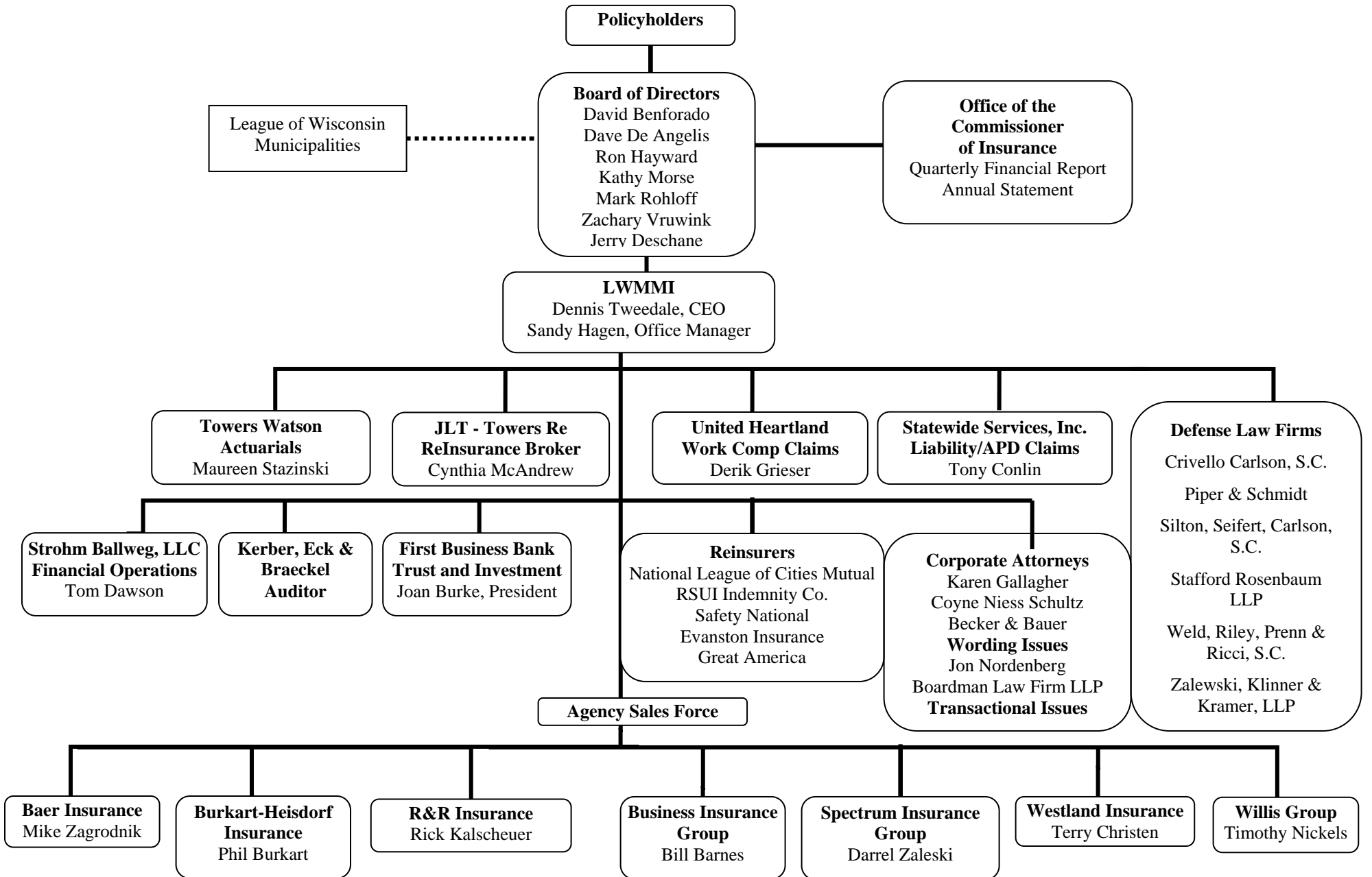
402 Gammon Place  
Suite 225  
Madison, WI 53719

608.833.9595 p  
608.833.8088 f  
dennis@lwmmi.org  
www.lwmmi.org





# League of Wisconsin Municipalities Mutual Insurance Organization Chart





Administered by  
United Heartland

# Safety Program/Resource Reference Check

## What Programs/Resources Should We Have?

Name of Person Completing: \_\_\_\_\_

Date: \_\_\_\_\_

This document will provide you assistance in determining the safety program needs in developing a safety manual based on your municipalities own specific work exposures. Also included are employee training programs and toolbox/safety talks to further support the development of your safety program. All of the below resources can be accessed by entering your policyholder login information at <http://www.unitedheartland.com/> and by clicking on the UH Client Services tab.

Basic Elements- All Municipalities Need	LWMMI Safety Manual Document	Employee Training Program*	Toolbox/Safety Talks
<b>Recordkeeping</b> (you need to keep a log, no matter how small employee base is)	<a href="#">LC-1013</a>	Recordkeeping- Injury & Illness (Lezage)	
<b>Personal Protective Equipment</b> – items include safety glasses, ear protection, safety shoes, etc.	<a href="#">LC-1015</a>	PPE-What Employees Need to Know (Lezage) Personal Protective Equipment (CLMI)	<a href="#">LC-1120</a> Eye Safety <a href="#">LC-1126</a> Hand Safety
<b>Hazard Communication/Global Harmonization System (GHS)</b> – Safety Data Sheets	<a href="#">LC-2009</a>	Hazard Communication (Lezage) GHS Labels & Safety Data Sheets (CLMI)	<a href="#">LC-0804</a> Flammable & Combustible Liquids
<b>Bloodborne Pathogens (BBP)</b> – universal precautions	<a href="#">LC-1020c</a>	BBP- General (Lezage) BBP- Control Your Exposure (CLMI)	
<b>Emergency Action Procedures &amp; Fire Prevention</b> – evacuation and fire prevention plans	<a href="#">LC-2007</a> <a href="#">LC-2021b</a>	Emergency Action & Fire Protection (Lezage) Emergency Preparedness (CLMI)	<a href="#">LC-1122</a> Fire Prevention
<b>CPR/First Aid</b> – employee(s) trained in first aid, CPR		Basic First Aid for Medical Emergencies (Lezage)	<a href="#">LC-0805</a> First Aid
<b>Walking/Working Surfaces and Slip/Trip/Fall Prevention</b>		Slips, Trips, Falls (Lezage) Housekeeping (CLMI)	<a href="#">LC-0813</a> Slip & Fall Hazards <a href="#">LC-1145</a> Preventing S/T/F
<b>Accident Investigation</b>	<a href="#">LC-0007a</a> , <a href="#">LC-0011a</a> <a href="#">LC-0009a</a> , <a href="#">LC-0012a</a> <a href="#">LC-0012b</a>	Accident Investigation (Lezage) Close Calls and Near Misses (CLMI)	<a href="#">LC-1117</a> Incident Reporting
<b>Early Return to Work</b>	<a href="#">LC-0506a</a> <a href="#">LC-0506b</a> <a href="#">LC-2005</a>	Workers' Compensation- What Supervisors Need to Know (Lezage) Workers' Compensation Management (CLMI)	
<b>Workplace Violence</b>		Workplace Safety for Employees (Lezage) Taking Control of Workplace Violence (CLMI)	

Our safety evaluations, reports and recommendations are made solely to assist your organization in reducing hazards and the potential of hazards and accidents. These recommendations were developed from conditions observed and information provided at the time of our visit. They do not attempt to identify every possible loss potential, hazard or risk, nor do they guarantee that workplace accidents will be prevented. These safety evaluations, reports and recommendations are not a substitute for ongoing, well-researched internal safety and risk management programs. This report does not warrant that the property inspected and its operations are compliant with any law, rule or regulation.

**UnitedHeartland.com ■ 1.800.258.2667**

United Heartland is the marketing name for United Wisconsin Insurance Company, a member of [Accident Fund Holdings, Inc.](#) (AFHI).

All policies are underwritten by a licensed insurer subsidiary of AFHI.

LC-2011 Rev. 02/15



Administered by  
United Heartland

# Safety Program/Resource Reference Check

## What Programs/Resources Should We Have?

Exposure-Based Safety Programs	Yes/No	LWMMI Safety Manual Document	Employee Training Program*	Toolbox/Safety Talk
<b>Confined Space</b> – Do you enter into confined spaces?	<input type="checkbox"/>	LC-2006	Confined Space- For Supervisors (Lezage) Confined Space Entry (CLMI)	<a href="#">LC-1110</a> Confined Space
<b>Electrical/Arc Flash</b> – Do you perform work on live electrical components or make repairs?	<input type="checkbox"/>	LC-1005c	Electrical Safety- Unqualified Worker (Lezage) Electrical Arc Flash Safety (CLMI)	<a href="#">LC-809</a> Electrical Safety <a href="#">LC-1116</a> Electrical Hazards
<b>Excavation/Trenching</b> – Do you perform work in trenches, i.e. sewer installation, or have any work below 4' of the surface?	<input type="checkbox"/>	LC-2008a	Trenching- Competent Person (Lezage) In the Trenches: Excavation Safety (CLMI)	
<b>Fall Protection</b> – Do you have employees working greater than 6' off the ground?	<input type="checkbox"/>	In Development	Fall Protection- Construction (Lezage) The ABC's of Your Fall Arrest System (CLMI)	<a href="#">LC-822</a> Fall Protection Req. <a href="#">LC-823</a> Fall Protection Quiz
<b>Fire Extinguishers</b> – Do you train you employees on fire extinguisher use?	<input type="checkbox"/>	LC-1021b	Fire Extinguishers (Lezage) Fire Extinguishers- Ready to Respond (CLMI)	<a href="#">LC-0806</a> Fire Extinguishers
<b>Hearing Conservation</b> – Do you have time-weighted average (TWA) noise levels above 85 dBA or have loud equipment which requires the use of hearing protection?	<input type="checkbox"/>	LC-1011b	Hearing Conservation (CLMI)	<a href="#">LC-1138</a> Noise Reduction
<b>Ladder Safety</b> – Does your municipality work on ladders or make man-made ladders?	<input type="checkbox"/>	LC-1022c	Ladder Safety (Lezage) A Practical Approach to Ladder Safety (CLMI)	
<b>Lockout/Tagout</b> – Do you have machinery to service with more than one power supply?	<input type="checkbox"/>	LC-1017	Lockout/Tagout- Affected Employee (Lezage) Controlling Hazardous Energy Sources (CLMI)	<a href="#">LC-1132</a> Lockout/Tagout
<b>Power Industrial Vehicles</b> – Does your municipality operate forklifts or other powered industrial vehicles?	<input type="checkbox"/>	In Development	Forklift Operator Safety (Lezage) Handle with Care: Forklift Safety Training (CLMI)	<a href="#">LC-1123</a> Forklift Safety <a href="#">LC-1146</a> Forklift Operation
<b>Power Platforms</b> – Does your municipality operate equipment like scissors lifts, articulating boom trucks or aerial lifts?	<input type="checkbox"/>	In Development	Ariel Lift Safety (Lezage) Safe Operation of Scissor and Boom Lifts (CLMI)	

Our safety evaluations, reports and recommendations are made solely to assist your organization in reducing hazards and the potential of hazards and accidents. These recommendations were developed from conditions observed and information provided at the time of our visit. They do not attempt to identify every possible loss potential, hazard or risk, nor do they guarantee that workplace accidents will be prevented. These safety evaluations, reports and recommendations are not a substitute for ongoing, well-researched internal safety and risk management programs. This report does not warrant that the property inspected and its operations are compliant with any law, rule or regulation.

**UnitedHeartland.com ■ 1.800.258.2667**

United Heartland is the marketing name for United Wisconsin Insurance Company, a member of [Accident Fund Holdings, Inc.](#) (AFHI).

All policies are underwritten by a licensed insurer subsidiary of AFHI.



MUTUAL INSURANCE  
Administered by  
United Heartland

# Safety Program/Resource Reference Check

## What Programs/Resources Should We Have?

Exposure-Based Safety Programs	Yes/No	LWMMI Safety Manual Document	Employee Training Program*	Toolbox/Safety Talk
<b>Respiratory Protection</b> – Do you have operations which require employees to wear respirators, i.e. N95, half face, air supplied, etc.?	<input type="checkbox"/>	LC-1023b	Respiratory Protection (Lezage) Respiratory Protection in Construction (CLMI)	
<b>Rigging</b> – Do you use slings or, hoist or do material handling?	<input type="checkbox"/>	In Development	Crane Rigging (Lezage) Chains, Cranes, Slings, and Hoists (CLMI)	<a href="#">LC-1111</a> Cranes & Hoists
<b>Welding, Cutting, or Brazing</b> – Do you perform any form of hot work?	<input type="checkbox"/>	LC-1012c	Welding, Cutting, and Brazing (Lezage) HIGH-IMPACT Welding Safety (CLMI)	<a href="#">LC-1102</a> Arc Welding

Office-Based Resources	LWMMI Safety Manual Document	Employee Training Program*	Toolbox/Safety Talk
Stretching Guidelines	LC-0236a	Office Injury Prevention (CLMI)	<a href="#">LC-1129</a> Injury-Free Office <a href="#">LC-1139</a> Office Safety
Computer Workstation Setup	LC-0226a LC-0227b LC-0227a	Office Ergonomics (Lezage)	

\*CLMI Videos can be purchased for \$99 using the code 3YLR from United Heartland's website

Our safety evaluations, reports and recommendations are made solely to assist your organization in reducing hazards and the potential of hazards and accidents. These recommendations were developed from conditions observed and information provided at the time of our visit. They do not attempt to identify every possible loss potential, hazard or risk, nor do they guarantee that workplace accidents will be prevented. These safety evaluations, reports and recommendations are not a substitute for ongoing, well-researched internal safety and risk management programs. This report does not warrant that the property inspected and its operations are compliant with any law, rule or regulation.

**UnitedHeartland.com ■ 1.800.258.2667**

United Heartland is the marketing name for United Wisconsin Insurance Company, a member of [Accident Fund Holdings, Inc.](#)(AFHI).

All policies are underwritten by a licensed insurer subsidiary of AFHI.



# United Heartland CLMI Video/Program List

Our program allows you access to CMLI Blue Prints® Safety Programs and Videos at a discounted rate. You keep the programs and videos, nothing to return.

Full CLMI Programs include a binder, training presentation, written program template and the video in DVD or VHS format. All programs are available in DVD or Streaming Video formats.

To order any one of the programs log onto Client Services at [www.UnitedHeartland.com](http://www.UnitedHeartland.com).

The following is a list of programs available by category. An asterisk (\*) after a title indicates it is available in Spanish.

## Accident Investigation

- Accident Investigation\*
- Accidents Aren't Just One of Those Things\*
- Close Calls and Near Misses\*

## Back Injury Prevention

- A Bit About Backs
- Back in Step: The Road to Recovery from Back Pain
- Back Injury Prevention\*
- Back Safety: Exercise and Ergonomics
- Back Safety: Proper Lifting Procedures
- Elements of Back Care – General Industry Version\*
- Elements of Back Care – Health Care Version
- On the Road: The Lighter Side of Lifting
- Stretching Out at Work
- Take 5 Module 1 – Lifting
- Take 5 Module 2 – Ergonomics
- Take 5 Module 3 – Stretching
- Take 5 Module 4 – Sitting
- Take 5 Module 5 – Standing
- The Back Owner's Guide to Lifting and Stretching\*

## Bloodborne Pathogens

- New! Bloodborne Pathogens: Always Protect Yourself\*
- Bloodborne Pathogens – Control Your Exposure\*
- Preventing the Spread of Contagious Illness
- Safety Guidelines for Every Employee
- WSI: Bloodborne Pathogens

## Chemical Safety

- New! GHS Labels and Safety Data Sheets\*
- Hazard Communication: The Message is Safety
- Hazard Communication: KHAZ Talk Radio\*
- Hazard Communication: You're in Control\*
- Hexavalent Chromium Employee Training
- Hydrogen Sulfide Employee Training
- One Tiny Spark: Flammable Liquid Safety\*
- Silica Exposure: It Can Leave You Breathless\*
- Spill Assessment and You
- Take the Lead on lead: Understanding OSHA's Lead Standards
- WHMIS: Your Key to Chemical Safety
- Your Key to Chemical Safety – Canadian Version

## Confined Space Entry

- Confined Space Entry\*
- Confined Space Entry Certification Series
- Confined Spaces: Risk and Responsibilities
- Hydrogen Sulfide Employee Training

Our safety evaluations, reports and recommendations are made solely to assist your organization in reducing hazards and the potential of hazards and accidents. These recommendations were developed from conditions observed and information provided at the time of our visit. They do not attempt to identify every possible loss potential, hazard or risk, nor do they guarantee that workplace accidents will be prevented. These safety evaluations, reports and recommendations are not a substitute for ongoing, well-researched internal safety and risk management programs. This report does not warrant that the property inspected and its operations are compliant with any law, rule or regulation.

**UnitedHeartland.com ■ 1.800.258.2667**

United Heartland is the marketing name for United Wisconsin Insurance Company, a member of [Accident Fund Holdings, Inc.](http://www.AccidentFundHoldings.com) (AFHI).

All policies are underwritten by a licensed insurer subsidiary of AFHI.

LC-0482 Rev. 11/14



Managing Risk. Insuring Success.

# United Heartland CLMI Video/Program List

## Construction Safety

- New! Getting the Job Done Safely: Worker Orientation\*
- New! Hand and Power Tool Safety
- New! Housekeeping on the Jobsite: A Plan for Success
- New! Safety During Renovation and Demolition Operations
- A Firm Footing: Pile Driving Safety
- A Part of the Process: Contractor's Guide to Process Safety Management
- A Practical Approach to Ladder Safety\*
- A Safe Span: Bridge Construction Safety
- Accidents Aren't Just One of Those Things\*
- Aerial Work Platform Safety Training\*
- Avoid the Heat: Fire Prevention in Construction
- Back to Basics: Back Injury Prevention\*
- Backhoe Safety Inspection and Walk Around
- Breathing Easier: Respiratory Protection in the Construction Industry\*
- Breathing Easier: Respiration Protection in the Construction Industry – Selecting, Fitting and Maintaining Respirators
- Clearing the Air: Confined Space Entry
- Controlling the Field: Jobsite Safety Inspection
- Crane Signal Person Basic Training
- Electrical Safety for the Construction Worker
- Handle With Care: Jobsite Hazardous Waste Safety
- Hazard Communication: The Message is Safety
- Heightened Awareness: Fall Protection in the Construction Industry
- Hexavalent Chromium Employee Training
- HIGH-IMPACT Welding Safety\*
- Hot Work: Welding and Cutting Safety
- In the Trenches: Excavation Safety for Workers\*
- Make the Right Move: Materials Handling Safety
- Making the Move: Trailering Construction Equipment Safely
- On the Go: Forklift Safety\*
- On Your Guard: Power Tool Safety
- Pave Your Way to Safety: Concrete Paving Safety
- Personal Protective Equipment for Construction
- Play It Safe: Crane Safety
- Putting It All Together: Scaffold Safety\*
- Rolling Towers: Mobile Scaffold Safety
- Safety: The Bottom Line
- Silica Exposure: It Can Leave You Breathless\*
- Sound Advice: Hearing Conservation on the Jobsite
- Step-by-Step: Job Safety Analysis
- Swing Stage Scaffolds: Raising Safety to a New Level\*
- Take Charge: Working Safely with Temporary Electricity
- Take the Lead on Lead: Understanding OSHA's Lead Standards
- Take the Steps: Stairway and Ladder Safety for the Construction Industry
- The ABC's of your Personal Fall Arrest System\*
- The Best Strategy: Personal Protective Equipment\*
- The Road to Safety: Overview of DOT Commercial, Drug and Alcohol Testing Requirements
- The Sky's the Limit: Aerial Work Platform Safety
- The Winning Ticket: Housekeeping on the Jobsite\*
- Think Again: Substance Abuse on the Jobsite
- Thinking Ahead: Driver's Safety
- What Goes Up Must Come Down: Demolition Safety
- Working Safely in Hot Environments\*
- Working Safely With Hand & Power Tools\*

## Crane Safety

- Above the Hook: Wire Rope
- Chains, Cranes, Slings and Hoists\*
- Crane Rigging Safety
- Crane Signal Person Basic Training
- Mobile Crane Capacities
- Mobile Crane Setup
- Overhead Crane Safety
- Play It Safe: Crane Safety
- Specialized Crane Operations

Our safety evaluations, reports and recommendations are made solely to assist your organization in reducing hazards and the potential of hazards and accidents. These recommendations were developed from conditions observed and information provided at the time of our visit. They do not attempt to identify every possible loss potential, hazard or risk, nor do they guarantee that workplace accidents will be prevented. These safety evaluations, reports and recommendations are not a substitute for ongoing, well-researched internal safety and risk management programs. This report does not warrant that the property inspected and its operations are compliant with any law, rule or regulation.

UnitedHeartland.com ■ 1.800.258.2667

United Heartland is the marketing name for United Wisconsin Insurance Company, a member of [Accident Fund Holdings, Inc.](#) (AFHI).

All policies are underwritten by a licensed insurer subsidiary of AFHI.

LC-0482 Rev. 11/14 pg. 2



Managing Risk. Insuring Success.

# United Heartland CLMI Video/Program List

## Driving Safety/Defensive Driving

- A DUI Story... What If?
- Crash Course: Vehicle Incident Reporting
- Defensive Driving – Auto/I Could See It Coming
- Defensive Driving – Cargo Vans
- Defensive Driving – Safe Backing and Parking
- Defensive Driving – Step Vans
- Defensive Driving – Why Do We Drive the Way We Do?
- Defensive Driving for Step/Delivery Vans
- Defensive Driving for Supervisors – It's Good Business
- Distracted Driving: At What Cost?
- Defensive Driving: When Good Weather Goes Bad
- Distractions: Behind the Wheel for Drivers
- Driving Safely in Winter Conditions
- Every 15 Minutes...
- Flatbed Safety
- Preventing Motor Vehicle Collisions\*
- The Blindfold Effect\*
- The Road to Safety: Overview of DOT Commercial, Drug and Alcohol Testing Requirements
- Thinking Ahead: Driver's Safety
- Tips and Techniques for Safer Driving
- Trucks, Vans and Other Delivery Vehicles
- Working Safely with Snowplows

## Electrical Safety

- New! Electrical Safety: What Everyone Should Know\*
- New! NFPA 70E – Electrical Safety-Related Work Practices – 2012 Version
- Basic Electrical Safety for Non-Electricians\*
- Electrical Arc Flash Safety
- Take Charge: Working Safely with Temporary Electricity

## Employee Health and Wellness

- A DUI Story... What If?
- Achieving a Drugfree Workplace: What Every Employee Needs to Know
- Every 15 Minutes...
- I Could Have Saved a Life That Day\*
- Managing the Anger to Prevent the Violence
- Preventing the Spread of Contagious Illness
- The Birthday Wish
- The Road to Safety: Overview of DOT Commercial, Drug and Alcohol Testing Requirements
- Working Safely in Hot Environments\*
- Workplace Harassment, Discrimination and Respect
- Workplace Violence: Myths and the Mystery

## Environmental

- Heat Stress: The Healthy Approach\*
- Spill Assessment and You

## Ergonomics

- New! Ergonomics for the Mobile Worker
- New! Office Ergonomics
- Basics of Ergonomics\*
- Elements of an Ergonomics Program\*
- Ergonomic Task Analysis – Module 1 Survey and Analyze
- Ergonomic Task Analysis – Module 2 Focus and Eliminate
- Office Ergonomic Task Analysis
- Principles of Office Ergonomics
- Putting on Your Ergonomic Glasses
- Take 5 Module 2 - Ergonomics
- Understanding Musculoskeletal Disorders\*

## Fall Protection

- A Practical Approach to Ladder Safety\*
- Construction Fall Protection
- Small Falls Are a Big Deal\*
- Take the Steps: Stairway and Ladder Safety for the Construction Industry
- The ABC's of Your Personal Fall Arrest System\*

Our safety evaluations, reports and recommendations are made solely to assist your organization in reducing hazards and the potential of hazards and accidents. These recommendations were developed from conditions observed and information provided at the time of our visit. They do not attempt to identify every possible loss potential, hazard or risk, nor do they guarantee that workplace accidents will be prevented. These safety evaluations, reports and recommendations are not a substitute for ongoing, well-researched internal safety and risk management programs. This report does not warrant that the property inspected and its operations are compliant with any law, rule or regulation.

UnitedHeartland.com ■ 1.800.258.2667

United Heartland is the marketing name for United Wisconsin Insurance Company, a member of [Accident Fund Holdings, Inc.](#) (AFHI).

All policies are underwritten by a licensed insurer subsidiary of AFHI.

LC-0482 Rev. 11/14 pg. 3



# United Heartland CLMI Video/Program List

## Fire and Emergency Response

- Emergency Preparedness\*
- Emergency Preparedness: A Supervisor's Role
- Fire Extinguishers – Ready to Respond\*

## Forklift Safety

- New! Handle With Care: Forklift Safety Training\*
- Forklift Operator Training – IVOD
- Forklift Safety Training\*

## Hand Safety

- Blink & You Could Lose Your Hand\*
- Boxcutter/Utility Knife Safety
- Every Time I Look at My Hand

## Hazard Communication (HazCom)

- New! GHS Labels and Safety Data Sheets\*
- New! Hazard Communication: Your Key to Chemical Safety\*
- Compressed Gas Cylinders – IVOD
- Employee Safety and Orientation Training
- Hazard Communication: KHAZ Talk Radio\*
- Hazard Communication: You're in Control – IVOD
- Hazard Communication: You're in Control\*

## Hearing Conservation

- New! Hearing Conservation: Are You Listening, Jim?\*
- Hearing Conservation\*

## Hot Topics

- New! Handle with Care: Forklift Safety Training\*
- New! Bloodborne Pathogens: Always Protect Yourself
- New! Electrical Safety: What Everyone Should Know
- New! NFPA 70E – Electrical Safety-Related Work Practices – 2012 Version
- Crane Signal Person Basic Training
- Employee Safety and Orientation Training

## Housekeeping

- New! Housekeeping on the Jobsite: A Plan for Success

## Ladder Safety

- New! Ladder Safety: Using Ladders Safely\*

- Housekeeping
- One Tiny Spark: Flammable Liquid Safety\*
- Spill Assessment and You

- Order Picker Safety\*
- Powered Pallet Jack Safety\*

- HIGH IMPACT Hand Safety\*
- Knife Safety in the Workplace\*

- HAZWOPER Fire Prevention – IVOD
- Hexavalent Chromium Employee Training
- Hydrogen Sulfide Employee Training
- One Tiny Spark: Flammable Liquid Safety\*
- Safety Guidelines for Every Employee
- WHMIS: Your Key to Chemical Safety
- Your Key to Chemical Safety – Canadian Version

- Hearing Conservation: What...?\*
- Safety Awareness 2: Real Accidents, Real Stories

- Heat Stress: The Healthy Approach\*
- In the Blink of an Eye...
- Office Injury Prevention
- Personal Protective Equipment\*
- Safety Awareness 2: Real Accidents, Real Stories
- The Back Owner's Guide to Lifting and Stretching\*

- Housekeeping

- A Practical Approach to Ladder Safety\*

Our safety evaluations, reports and recommendations are made solely to assist your organization in reducing hazards and the potential of hazards and accidents. These recommendations were developed from conditions observed and information provided at the time of our visit. They do not attempt to identify every possible loss potential, hazard or risk, nor do they guarantee that workplace accidents will be prevented. These safety evaluations, reports and recommendations are not a substitute for ongoing, well-researched internal safety and risk management programs. This report does not warrant that the property inspected and its operations are compliant with any law, rule or regulation.

UnitedHeartland.com ■ 1.800.258.2667

United Heartland is the marketing name for United Wisconsin Insurance Company, a member of [Accident Fund Holdings, Inc.](#) (AFHI).

All policies are underwritten by a licensed insurer subsidiary of AFHI.

LC-0482 Rev. 11/14





Managing Risk. Insuring Success.

# United Heartland CLMI Video/Program List

## Lockout/Tagout

- Controlling Hazardous Energy Sources\*
- HIGH-IMPACT Welding Safety\*
- Lockout/Tagout – Affected Employees\*
- Lockout/Tagout – Authorized Employees\*
- Machine Safeguarding\*

- Machines, Operators and Guards: Real Accidents, Real Stories\*
- One Will Die: The John Martin Story\*

## Machine Guarding and Equipment Safety

- Aerial Work Platform Safety Training\*
- Backhoe Safety Inspection and Walk Around
- Boxcutter/Utility Knife Safety
- HIGH-IMPACT Welding Safety\*
- HIGH-IMPACT Workplace Safety\*
- Knife Safety in the Workplace\*
- Lockout/Tagout – Affected Employees\*
- Lockout/Tagout – Authorized Employees\*

- Machine Safeguarding\*
- Machines, Operators, and Guards: Real Accidents, Real Stories\*
- Overhead Crane Safety
- Play It Safe: Crane Safety
- The Safe Operation of Utility Carts
- Working Safely With Hand & Power Tools\*

## Personal Protective Equipment

- New! Personal Protective Equipment: Your Final Defense\*
- Employee Safety and Orientation Training
- Eye Protection
- Hearing Conservation: What...?!\*
- HIGH-IMPACT Workplace Safety\*
- Knife Safety in the Workplace\*

- Personal Protective Equipment\*
- Personal Protective Equipment for Construction
- Respiratory Protection\*
- Safety Awareness 2: Real Accidents, Real Stories
- Safety Guidelines for Every Employee
- The Horror of Losing an Eye...

## Powered Industrial Trucks

- New! Handle With Care: Forklift Safety Training\*
- Aerial Work Platform Safety Training\*
- Forklift Safety Training\*
- Order Picker Safety\*

- Powered Pallet Jack Safety\*
- Reach Truck Safety\*
- Safe Operation of Scissor and Boom Lifts\*
- The Safe Operation of Utility Carts

## Preventing Slips, Trips and Falls

- Housekeeping
- Pedestrian Safety in Industry
- Slips Trips and Falls – General Industry\*
- Slips Trips and Falls – Health Care

- Slips Trips and Falls – Hotels
- Slips Trips and Falls – Restaurants
- Slips Trips and Falls – Retail

## Respiratory Protection

- New! Respiratory Protection: Your Guide to Clean Breathing\*
- Respiratory Protection\*

- Silica Exposure: It Can Leave You Breathless\*

Our safety evaluations, reports and recommendations are made solely to assist your organization in reducing hazards and the potential of hazards and accidents. These recommendations were developed from conditions observed and information provided at the time of our visit. They do not attempt to identify every possible loss potential, hazard or risk, nor do they guarantee that workplace accidents will be prevented. These safety evaluations, reports and recommendations are not a substitute for ongoing, well-researched internal safety and risk management programs. This report does not warrant that the property inspected and its operations are compliant with any law, rule or regulation.

UnitedHeartland.com ■ 1.800.258.2667

United Heartland is the marketing name for United Wisconsin Insurance Company, a member of [Accident Fund Holdings, Inc.](#) (AFHI).

All policies are underwritten by a licensed insurer subsidiary of AFHI.

LC-0482 Rev. 11/14 pg. 5



Managing Risk. Insuring Success.

# United Heartland CLMI Video/Program List

## Safety Awareness

- New! Threat Detector: Your Role in Preventing Workplace Violence
- Accidents Aren't Just One of Those Things\*
- Employee Safety and Orientation Training
- HIGH-IMPACT Workplace Safety\*
- Hydrogen Sulfide Employee Training
- I Chose To Look the Other Way\*
- I Could Have Saved a Life That Day\*
- In the Blink of an Eye...
- It Only Takes a Second\*
- It's Up to Me\*
- Office Injury Prevention
- One Will Die: The John Martin Story\*
- Safety Awareness 2: Real Accidents, Real Stories
- Safety Guidelines for Every Employee
- Safety Leadership for Everyone\*
- Small Falls Are a Big Deal\*
- Spill Assessment and You
- The Birthday Wish
- The Horror of Losing an Eye
- Workplace Violence: Myths and the Mystery

## Safety Program Management

- Accident Investigation\*
- Effective Safety Committees\*
- Emergency Preparedness\*
- Employee Safety and Orientation Training
- Fire Extinguishers – Ready to Respond\*
- Hazard Communication: KHAZ Talk Radio\*
- Housekeeping
- Safety Leadership for Everyone\*
- Safety Program Management
- Step-by-Step: Job Safety Analysis
- Taking Control of Workplace Violence
- Understanding Musculoskeletal Disorders\*
- Workers' Compensation Management

## Workplace Violence

- New! Threat Detector: Your Role in Preventing Workplace Violence
- I Could Have Saved A Life That Day\*
- Managing the Anger to Prevent the Violence
- Taking Control of Workplace Violence
- Workplace Harassment, Discrimination and Respect

Our safety evaluations, reports and recommendations are made solely to assist your organization in reducing hazards and the potential of hazards and accidents. These recommendations were developed from conditions observed and information provided at the time of our visit. They do not attempt to identify every possible loss potential, hazard or risk, nor do they guarantee that workplace accidents will be prevented. These safety evaluations, reports and recommendations are not a substitute for ongoing, well-researched internal safety and risk management programs. This report does not warrant that the property inspected and its operations are compliant with any law, rule or regulation.

UnitedHeartland.com ■ 1.800.258.2667

United Heartland is the marketing name for United Wisconsin Insurance Company, a member of [Accident Fund Holdings, Inc.](#) (AFHI).

All policies are underwritten by a licensed insurer subsidiary of AFHI.

LC-0482 Rev. 11/14 pg. 6